

310F2F SERIES

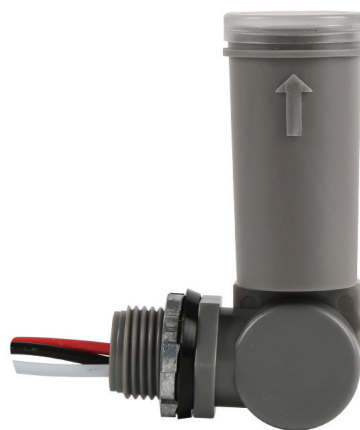
Swivel Photocontrols



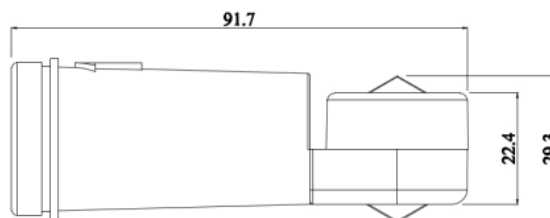
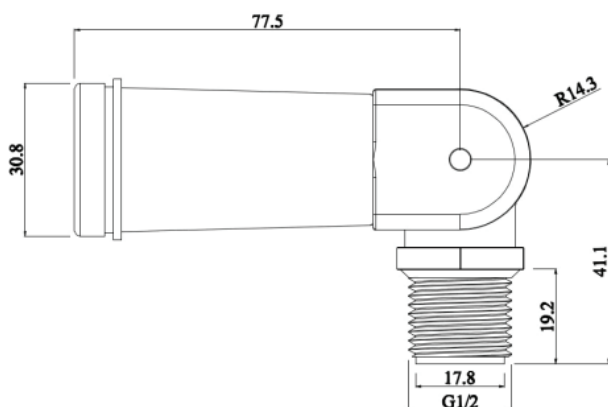
APPLICATIONS

GW pencil swivel wire in photocontrols are designed to turn lights on at dusk and off at dawn. Each features a built-in delay that helps to prevent false cycling due to car headlights and lightning. additional feature: die-cast aluminum housing. Use with parking lot lighting, security lighting, billboard lighting, municipal lighting, roadway lighting, and street lighting.

SPECIFICATIONS	DESCRIPTION
Standard	ANSI C136.24 & UL773A
Rated Volts	120V-277V
Rated Load	1000W/1800VA/5A E-Ballast
Frequency	50/60 Hz
Turn-On Light Levels	10-16 Lux
ON/OFF Ratio	1:1.5
Time Delay	3-15 Seconds
Operating Temperature	-40° to +70° C
Switch	>10000 ON/OFF Operations at Rated Load
Light Sensor	IR Filter Phototransistor
Power Consumption	≤ 0.7 watts at 120VAC
Housing	Anti-UV Impact Resistance Polycarbonate(PCS)
Cable	UL1015 18AWG*16cm



GW-310F2F



ORDERING INFORMATION

MODELS	DESCRIPTION
GW-310F2F	Swivel style wire in photocontrol

