



Gateway International 360, LLC

GATEWAY 360, BORN FOR GREEN ENERGY SOLUTIONS

✉ tstevens@gatewayintl360.com

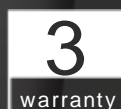
🌐 www.gatewayintl360.com

📍 P. O. Box 518, Bear, DE 19701

GW-EV900

Level 2

Up to 96A



ONE CHARGER, TWO OUTPUT



POWERFUL

Up to 80A / 19.2kW of charging capacity.



FLEXIBLE

Cable management allows access from either side of the vehicle.



DURABILITY

Type 3 and IK08 protection ratings, allowing for indoors or outdoors.



INTERACTION

Visual 7" LCD screen with user friendly interface.



CONNECTED

Complete with LAN connectivity (Wi-Fi or 4G optional), ensuring chargers are always online.



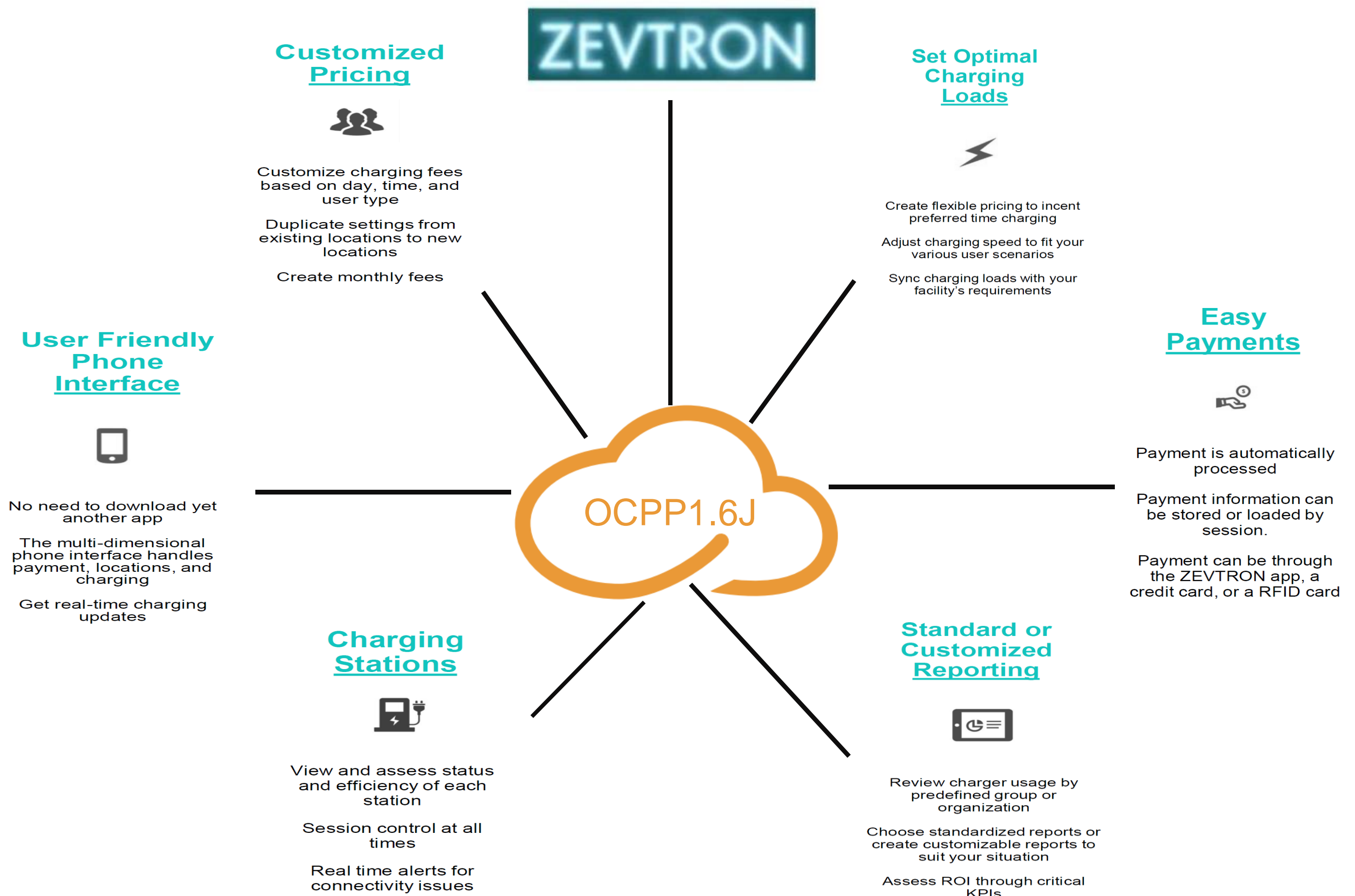
OCPP

OCPP 1.6J help you connect EV charger to the cloud.



| | |
|-----------------------|---|
| | <div> <div></div> <div> <div></div> <div></div> </div> </div> <div>DATASHEET</div> |
| Model No. | GW-EV900-2-19.2 |
| Input Voltage | 208–240Vac |
| Frequency | 60Hz |
| Amperage | 2 x 80A |
| Max. Power Output | 19.2kW+19.2kW |
| Protection & Standard | |
| Charging Interface | SAE J1772 Compliant, Type 1 Plug |
| Safety Compliance | UL2594, UL2231-1, UL2231-2 |
| Multiple Protection | UVP, OVP, RCD (CCID 20), SPD, Ground Fault Protection OCP, OTP, Control Pilot Fault Protection |
| Environmental | |
| Operating Temp. | -22°F to 122°F |
| Relative Humidity | Up to 95 % non-condensing |
| Cable Length | 18 ft Standard |

OCPP 1.6J, CONNECTED SUCCESSFULLY WITH GATEWAY/ZEVTRON EVC PLATFORMS



HOME APP

Manage your charging activity

- Connect via Wifi or Bluetooth
- Remote start or stop charging
- Schedule your charging time
- Adjust the output from 48 A to 60 A
- Dynamic load balance setting
- View charging history and power consumption
- Restart button

